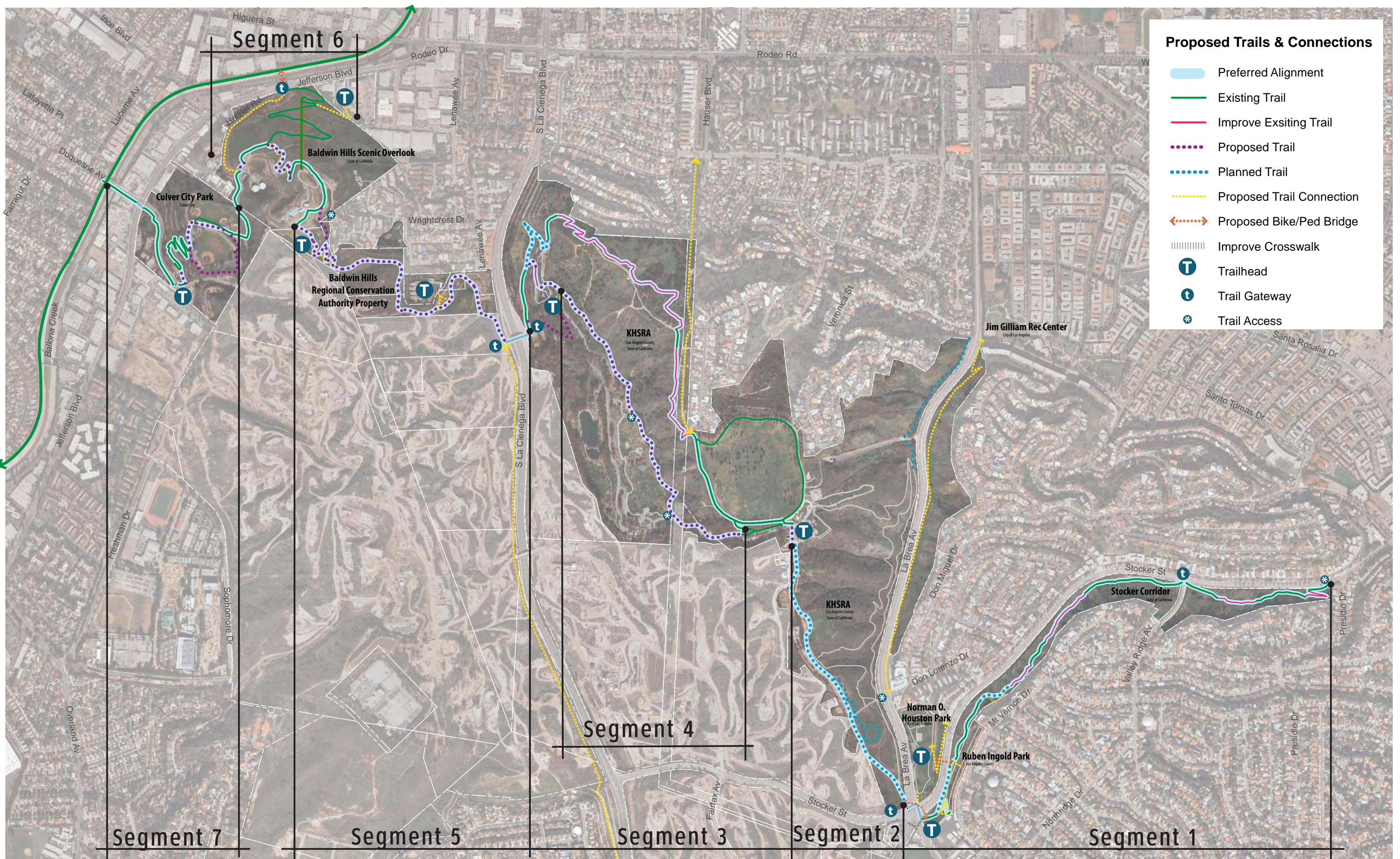


4. Trail Alignment and Improvement Plan



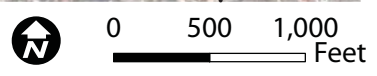
The Park to Playa Trail will traverse the ridgelines and valleys of the coastal sage scrub within the Baldwin Hills

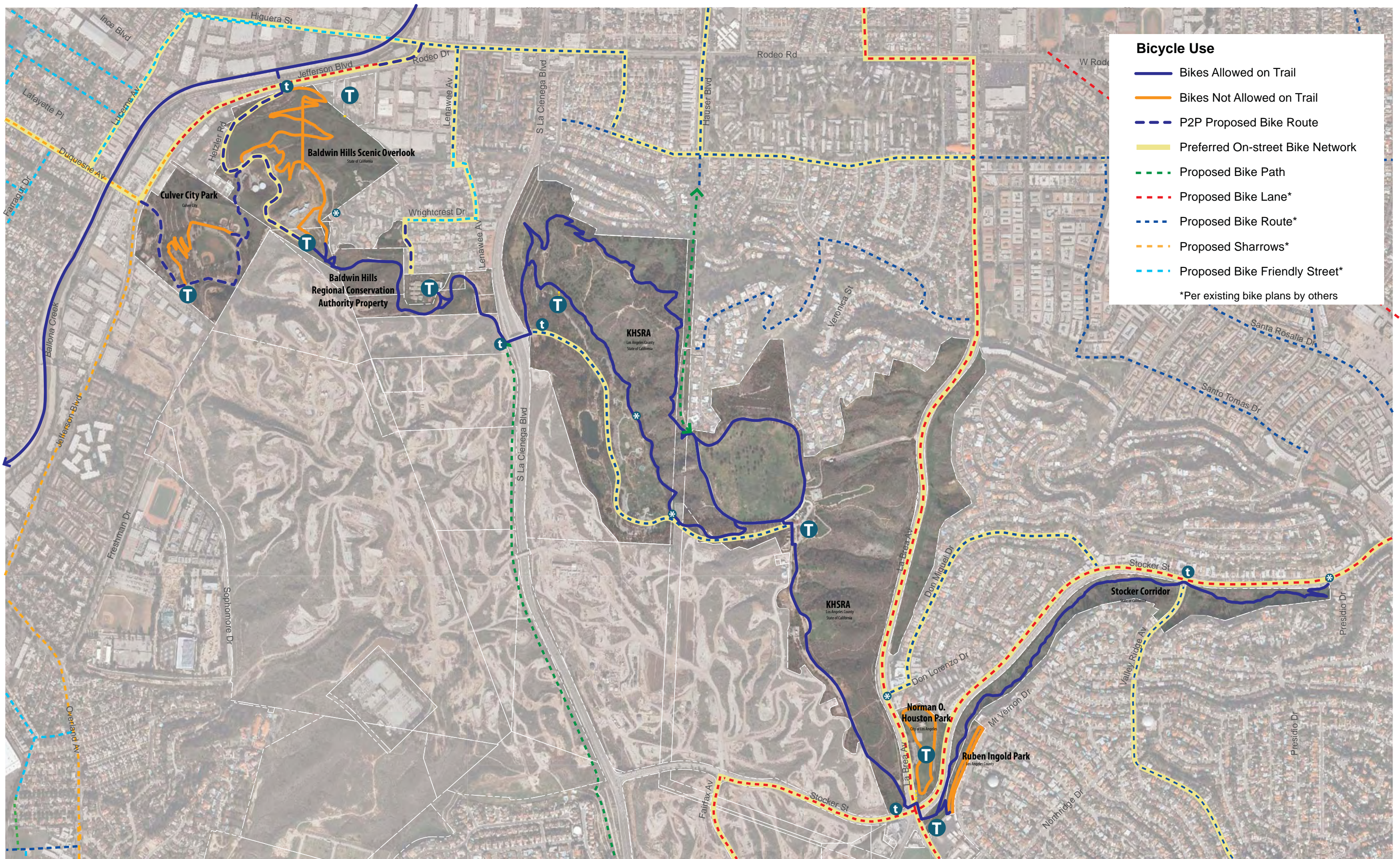
This page intentionally left blank



Map 4-1 Park to Playa Trail Proposed Alignment

Source Data: Los Angeles County, Bing Maps 11/2/11





Bicycle Use

- Bikes Allowed on Trail
- Bikes Not Allowed on Trail
- - - P2P Proposed Bike Route
- Preferred On-street Bike Network
- - - Proposed Bike Path
- - - Proposed Bike Lane*
- - - Proposed Bike Route*
- - - Proposed Sharrows*
- - - Proposed Bike Friendly Street*

*Per existing bike plans by others

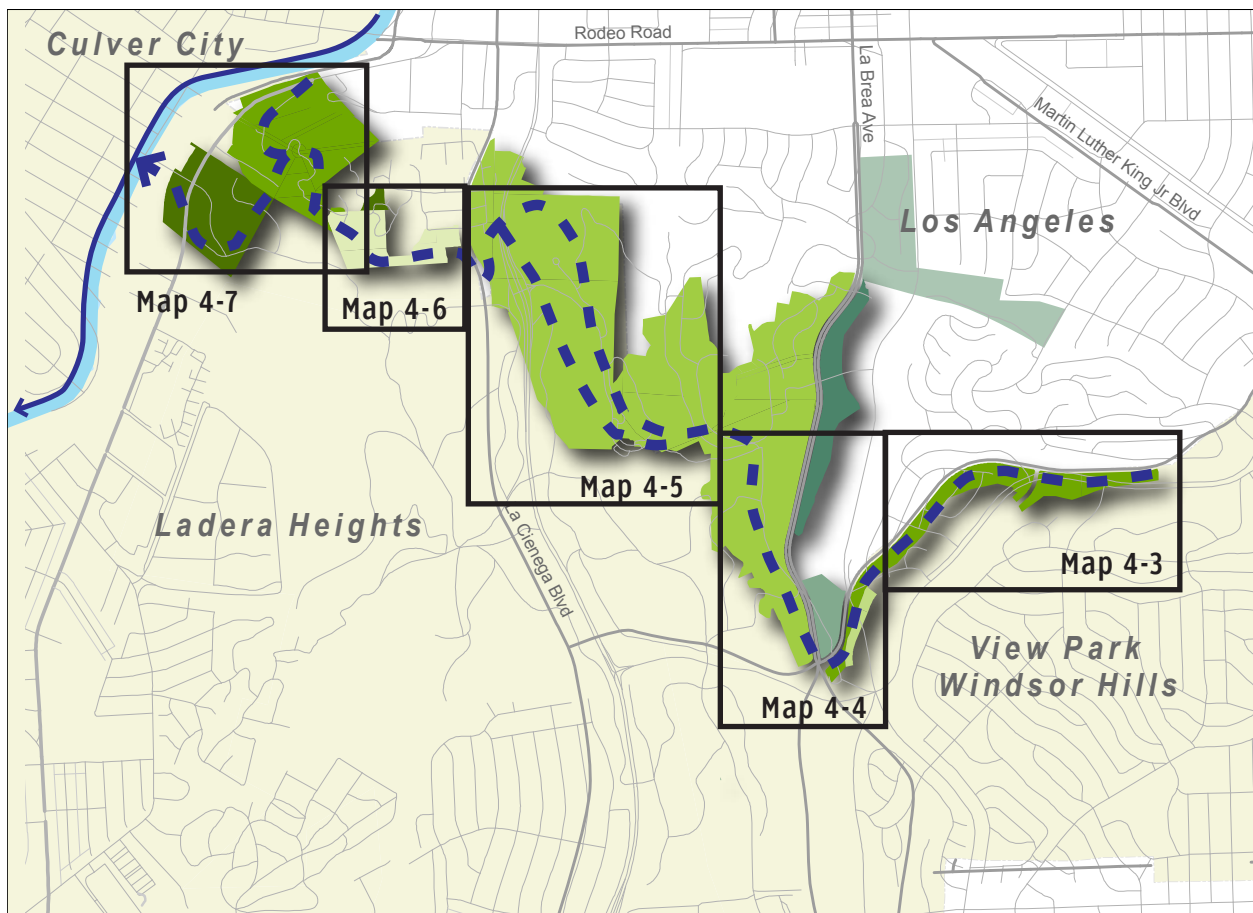
Map 4-2 Allowed Bicycle Use and Proposed On-street Bike Facilities

Source Data: Los Angeles County, Culver City, City of Los Angeles, Bing Maps 11/2/11

0 500 1,000 Feet

4.1 Introduction

This chapter identifies and describes recommended connections and improvements to the Park to Playa Trail on a segment-by-segment basis, moving generally East to West. The Opportunities and Constraints section in Chapter 2 describes the existing conditions in detail. The Design Guidelines, in Chapter 4 show the features of the trail improvements and amenities. Chapter 5 describes improvements to signage and wayfinding. The majority of the proposed segments are near-term recommendations for implementation. However, some proposed elements are longer-term recommendations, and have been labeled as such in this chapter. Please see Chapter 6 for additional information regarding trail implementation.



Park to Playa Segment Key Map